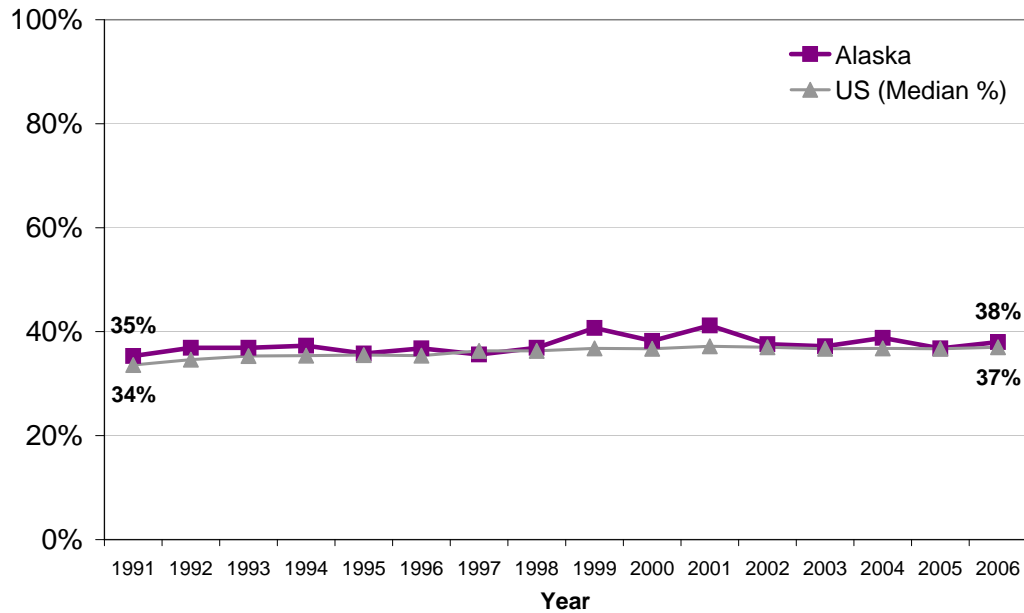


# Overweight (25 - 29.9 BMI)\*

## Overweight (25-29.9 BMI): Alaska vs. Nationwide



Risk Factors

### 2006

	n	weighted %	N	95% CI
<b>Gender</b>				
Male	423	45%	947	40.2 - 49.2
Female	339	31%	1,094	26.9 - 34.4
<b>Total</b>	<b>762</b>	<b>38%</b>	<b>2,041</b>	<b>35.0 - 41.1</b>
<b>Race</b>				
Native (any mention)	146	32%	446	26.4 - 39.1
Non-Native	614	39%	1,583	36.0 - 42.8
<b>Age</b>				
18-24	60	35%	173	26.5 - 45.6
25-34	109	31%	337	25.0 - 38.5
35-44	159	43%	407	36.9 - 49.5
45-54	185	41%	468	35.0 - 47.4
55-64	137	38%	364	31.1 - 46.4
65 or older	101	34%	266	27.3 - 42.1
<b>Education</b>				
Less than H.S.	50	28%	159	19.2 - 39.3
H.S. Grad or GED	219	35%	628	29.8 - 40.3
Some College or Tech School	230	38%	603	33.1 - 44.0
College Grad	261	43%	647	37.7 - 48.2
<b>Income</b>				
Less than \$15K	44	25%	160	17.4 - 35.2
\$15,000-24,999	74	37%	214	27.5 - 47.6
\$25,000-34,999	64	30%	210	22.0 - 39.5
\$35,000-49,999	121	42%	290	33.6 - 51.2
\$50,000-74,999	179	43%	419	37.0 - 50.1
\$75K+	217	41%	545	35.6 - 46.5

\*BMI = weight in kilograms divided by height in meters squared ( $[\text{weight in kg}]/[\text{height in meters}]^2$ )

n = Number of respondents who are overweight based on Body Mass Index (BMI) 25-29.9.

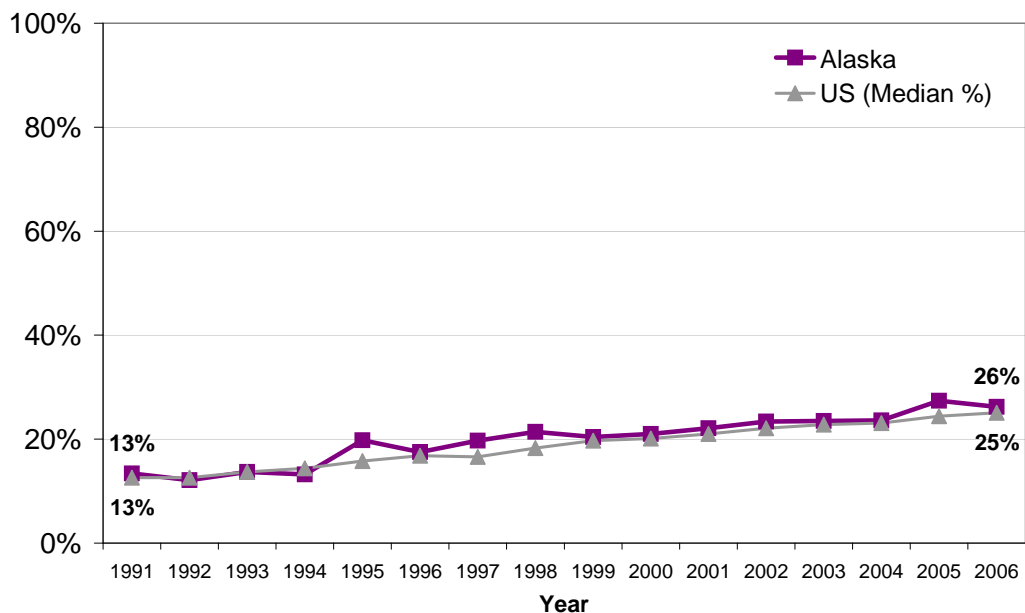
% = This is a weighted (adjusted) percentage of the state population (adult) at risk in this demographic subgroup, based on the survey data.

N = Total number of respondents in this subgroup.

95% CI = 95% Confidence Interval; the range of values within which the true value of a prevalence estimate would be expected to fall within, 95% of the time.

# Obesity (30+ BMI)\*

## Obesity (30+ BMI): Alaska vs. Nationwide



\*BMI = weight in kilograms divided by height in meters squared ( $[\text{weight in kg}]/[\text{height in meters}]^2$ )

### 2006

	n	weighted %	N	95% CI
<b>Gender</b>				
Male	258	26%	947	22.2 - 30.0
Female	320	27%	1,094	23.1 - 30.2
<b>Total</b>	<b>578</b>	<b>26%</b>	<b>2,041</b>	<b>23.6 - 28.9</b>
<b>Race</b>				
Native (any mention)	144	29%	446	23.1 - 35.1
Non-Native	429	26%	1,583	22.8 - 28.7
<b>Age</b>				
18-24	23	13%	173	7.8 - 21.4
25-34	78	22%	337	16.7 - 27.9
35-44	116	27%	407	21.8 - 32.5
45-54	148	31%	468	25.2 - 37.5
55-64	138	39%	364	31.2 - 46.6
65 or older	70	26%	266	19.3 - 33.1
<b>Education</b>				
Less than H.S.	43	23%	159	14.4 - 34.9
H.S. Grad or GED	206	29%	628	24.0 - 33.7
Some College or Tech School	171	30%	603	24.7 - 35.2
College Grad	157	21%	647	17.4 - 25.5
<b>Income</b>				
Less than \$15K	57	35%	160	25.3 - 46.9
\$15,000-24,999	67	27%	214	19.5 - 35.9
\$25,000-34,999	63	32%	210	23.8 - 41.4
\$35,000-49,999	66	17%	290	12.1 - 23.2
\$50,000-74,999	111	25%	419	20.0 - 31.4
\$75K+	161	28%	545	23.1 - 33.2

n = Number of respondents who are obese based on Body Mass Index (BMI) of 30 or greater.

% = This is a weighted (adjusted) percentage of the state population (adult) at risk in this demographic subgroup, based on the survey data.

N = Total number of respondents in this subgroup.

95% CI = 95% Confidence Interval; the range of values within which the true value of a prevalence estimate would be expected to fall within, 95% of the time.